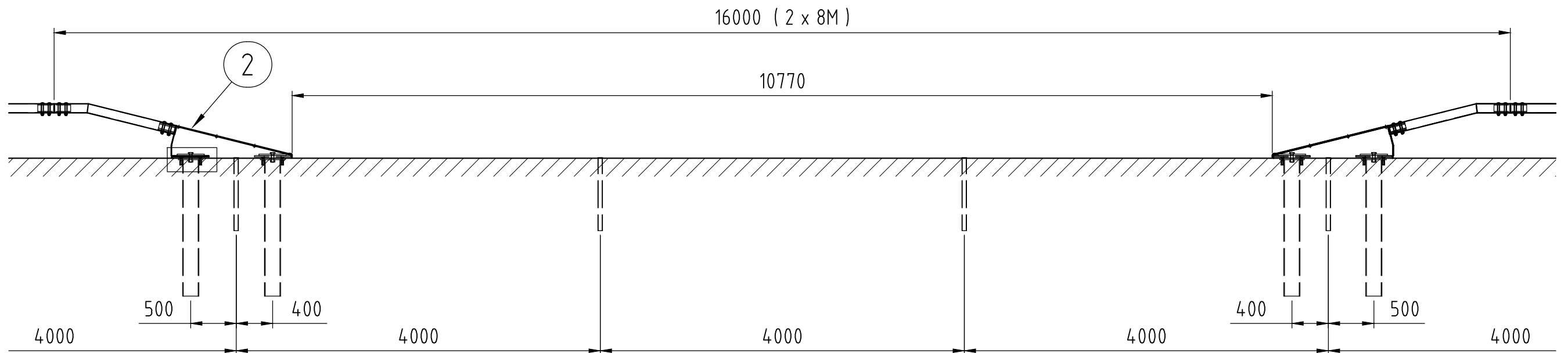
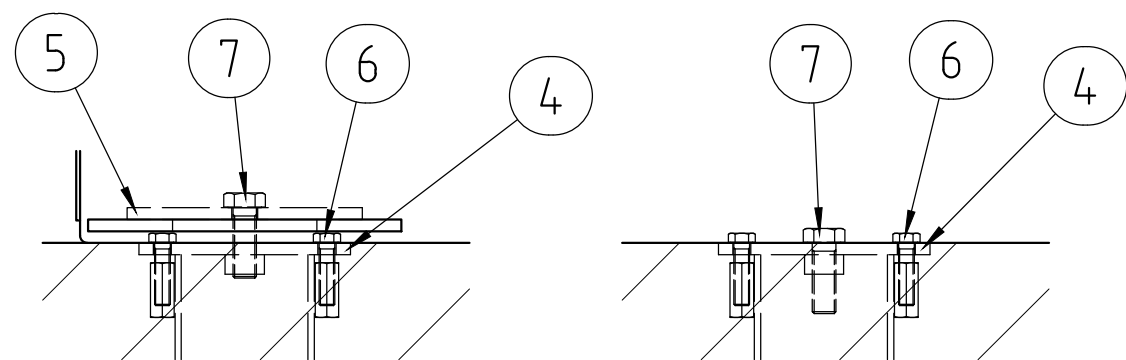


Side view



Side view, temporary open



"Nail" Guardrail open, "Nail" Guardrail "closed" (1:10)

7	4	M30x90 M6S 8.8			Article no. 1120300900
6	8	M20x80 M6S 8.8			Article no. 1120200800
5	2	Birsta 1P Anchor SP Washer			Article no. 8920562
4	4	Birsta 1P Cover for "nail"			Article no. 8920563
3	4	" NAIL "			Article no. 8920615
2	2	Anchor SP 2.6 m			Assembly no. 8910010
1	1	Birsta 1P, Guardrail cc 4m			Assembly no. 8910002

Item No.	Qty.	Description	Material	Dimension	Note	
Design.	Drawn	Copied	Control.	Stand.	Appr.	
	GLN		ALN			
Scale 1:50					Replaces	Replaced by

 Tel: 080 - 52 72 00 Fax: 080 - 52 72 15, 52 72 16	Birsta 1P, Guardrail Temporary opening		Filename 8910040	Date 2012-01-25
				Drawing no. 8910040